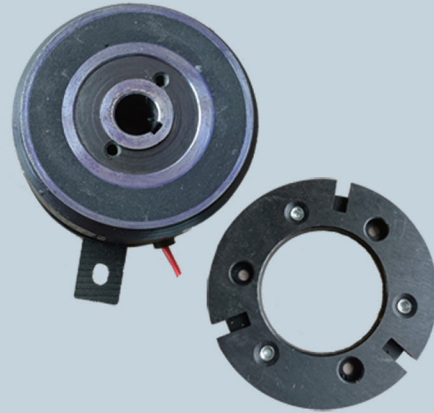


DLD2 series Power on single friction disc brake

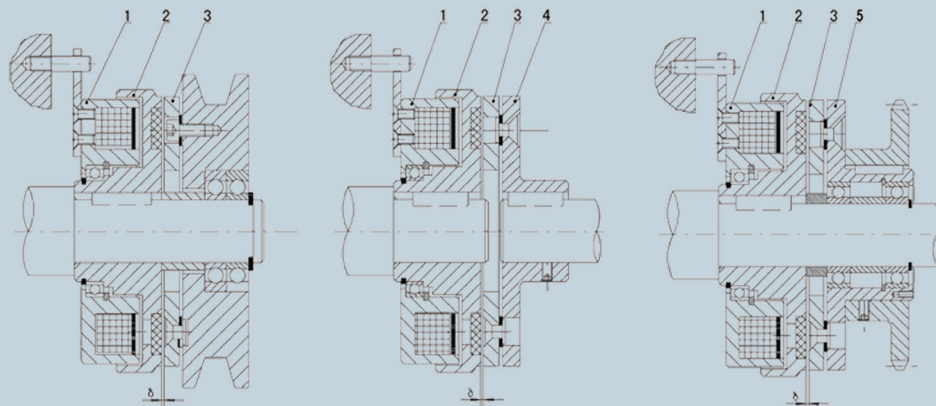
>>> Applications

DLD2 series is a dry single-chip electromagnetic clutch without slip ring, which works when energized. The coil does not rotate, and it has a friction plate. It has compact structure, large transmission torque, quick response and no no-load loss. Mechanical transmission system suitable for high-frequency operation can combine or separate the driven part from the driving part when the driving part is running. Widely used in packaging machinery, printing machinery, textile machinery, light industry machinery and office machinery.



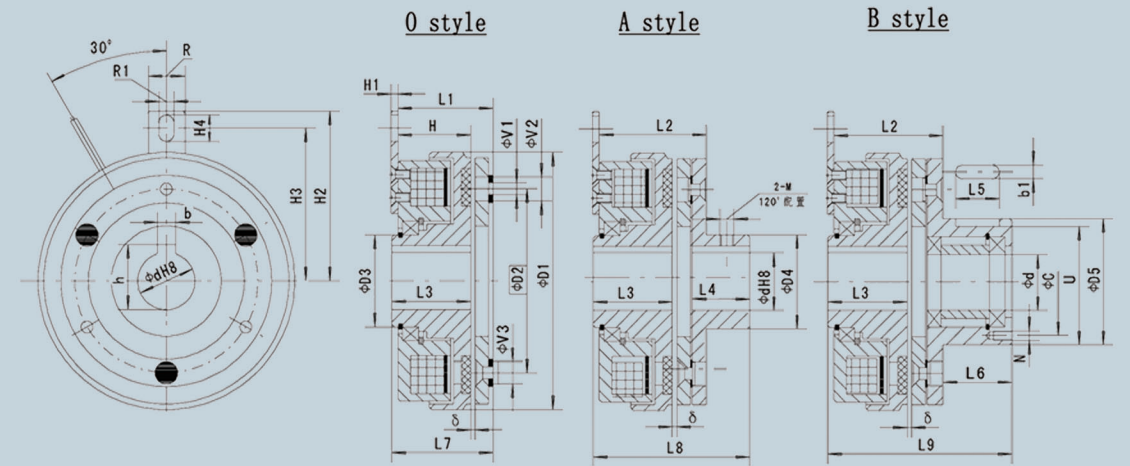
>>> Main Technical Data

Size	DLD2-0.6	DLD2-1.2	DLD2-2.5	DLD2-5	DLD2-10	DLD2-16
Rated torque(N*M)	6	12	25	50	100	160
Rated power 20°C(W)	13	16	20	32	40	45
Rated voltage(V dc)	24	24	24	24	24	24
Connection time (≤ms)	55	75	120	140	230	250
Disconnection time (≤ms)	15	25	35	45	60	90
Maximum operating speed (rpm)	3600	3600	3000	2500	2500	2500



1, Yoke assembly 2, Baffle assembly 3, Armature assembly 4, Style A connection 5, Style B connection

>>> Overall and Installation Dimensions



Size	∅d	b	h	D1	D2	D3	D4	D5	D6	V1	V2	V3	H	H1	H2	H3	H4
DLD2-0.5	15	5	17.3	69	50	20	26	38	12	3-∅4.1	3-∅8.5	3-∅7	24	2	50	42.5	9.5
DLD2-1.2	20	6	22.8	90	66	30	35	45	15	3-∅4.1	3-∅9	3-∅7	27	2.5	65	57.5	10.5
DLD2-2.5	25	8	28.3	112	80	40	41	55	20	3-∅5.2	3-∅10.5	3-∅8	32	2.5	70	62.5	11.5
DLD2-5	30	8	33.3	145	101	45	49	64	25	3-∅6.2	3-∅12.5	3-∅11	41.5	2.5	85	77.5	11.5
DLD2-10	35	10	38.3	169	120	50	65	75	30	3-∅8.2	3-∅16.5	3-∅14	39	3	112	100	18.5
DLD2-16	43	12	46.3	213	158	65	83	90	40	3-∅10.2	3-∅21	3-∅18	46.5	3.5	132	120	18.5

Size	R	R1	L1	L2	L3	L4	L5	L6	L7	L8	L9	U	C	N	M	b1	δ
DLD2-0.5	14	4.5	27.8	32.8	24	20	14	20	27.8	47.8	52.8	35.5	33	3-M4	M4	4	0.3
DLD2-1.2	16	5.5	32	37	29	20	16	25	34	54	64	42	37	3-M4	M6	5	0.3
DLD2-2.5	16	6.5	40.2	50.2	34.5	25	18	30	41.7	66.7	78.7	51.5	48	3-M4	M6	6	0.4
DLD2-5	16	6.5	50.3	60.3	44	30	20	40	52.8	82.8	98.8	57	54	3-M5	M6	8	0.4
DLD2-10	25	8.5	48.6	58.6	41.5	38	35	49	51.1	89.1	108.7	71	66	3-M5	M8	8	0.5
DLD2-16	25	8.5	58.2	68.2	51.5	45	40	59	63.2	108.2	132.2	85	80	3-M5	M8	8	0.5

>>> Installation

- A, The surface of friction plate and armature shall be free of oil stain and shall be kept clean;
- B, Coaxiality is not more than 0.1mm;
- C, The accuracy of shaft hole and shaft matched with clutch is H8/h7;
- D, The driven side of the brake shall be fixed without axial movement, and the working air gap must be ensured "δ".